

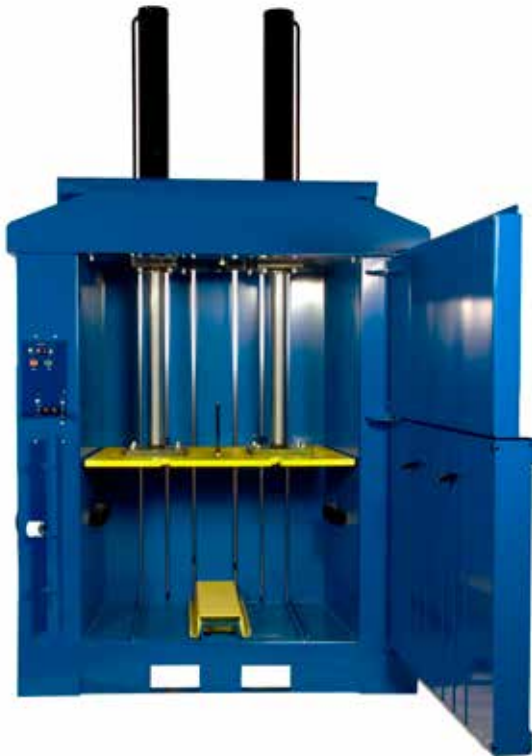
## MINOTAUR 400

### FEATURES

- Produces a mill size bale (weight 450 kg)
- Ideal for a large amount of material
- Retaining Claws to reduce spring back
- Large loading aperture for easy loading of material into baler
- Fully automated bale ejector simplifies removal of bale

### OPTIONAL EXTRAS

- Available with 220 - 240 volts power supply



### BALER DIMENSIONS

Height	<b>3.00 m</b>
Width	<b>1.781 m</b>
Depth	<b>1.196 m</b>
Weight	<b>1300 kg</b>
Transportation Ht	<b>2.3 m</b>
Power Supply	<b>380 - 400 V (three phase)</b>
Motor	<b>11 kW 32 Amp</b>
Pressing Force	<b>up to 25 Ton</b>
Noise Level	<b>75 decibels</b>

### BALE DIMENSIONS

Height	<b>1.00 m</b>
Width	<b>1.20 m</b>
Depth	<b>0.80 m</b>
Weight (depending on material used)	<b>Up to 450 kg</b>
Cycle Times	<b>40 seconds</b>

### LOADING APERTURE SIZES

Height	<b>0.68 m</b>
Width	<b>1.20 m</b>
Depth	<b>0.80 m</b>